

## Internal Communications:

### Routine Bulletin

## Community Risk Management Plan (CRMP) consultation launched



Our Community Risk Management Plan (CRMP) consultation is now open.

Formerly known as the Integrated Risk Management Plan (IRMP), this document sets out how we will make Lancashire safer over the next five years and we need your views.

The plan identifies the greatest risks to the people and communities of Lancashire, and how we will prevent and respond to incidents. This is a chance for you to highlight risks to your communities, and help shape how the service deals with them in the future.

Assistant Chief Fire Officer Ben Norman says:

"Lancashire Fire and Rescue Service strives to be the best trained, best equipped, best accommodated and most professional fire and rescue service in the country but now we need your help to help us plan for the next five years.

"Our role has adapted and expanded in recent years and we now assist people in more ways than ever before. The last 12 months have really highlighted this change as Lancashire Fire and Rescue Service has played a significant role in the response to the coronavirus pandemic in Lancashire but whilst also responding to severe wildfires and flooding."


"We want to understand from you what you believe, as an employee and as a resident in Lancashire, are our greatest risks and what we should plan for in the future. I encourage you to read our draft Community Risk Management Plan and provide your honest feedback."

A series of Teams sessions are also being held to give you the opportunity to gain a greater insight to the fundamental changes that have taken place in the methodology and production of the plan: [REDACTED]

Please also encourage any partners you work with, community members and businesses to take part in the consultation.

For more information and to take part visit [www.lancsfireandrescue.org.uk/plan](http://www.lancsfireandrescue.org.uk/plan)

The consultation closes on Tuesday 21 September.



[Home](#) [About Us](#) [News](#) [What We Do](#) [Health And Wellbeing](#) [Shout Up](#) [Off Duty](#) [Active Forms](#) [Training, Learning And Development](#) [Virtual Library](#)

You are here: [Home](#) > [News](#) > [We want to hear your views on our Community Risk Management Plan](#)

## 29 Jul | We want to hear your views on our Community Risk Management Plan

29 July 2021 -

Lancashire Fire and Rescue Service wants to know your views on the risks in your communities to help shape our plans for the next five years.

Our Community Risk Management Plan (CRMP) sets out how we will make Lancashire safer over the next five years. The plan identifies the greatest risks to the people and communities of Lancashire, and how we will prevent, protect and respond to incidents.

You can read the draft CRMP and take part in our consultation by visiting [www.lancsfireandrescue.org.uk/plan](http://www.lancsfireandrescue.org.uk/plan). The consultation period begins on Wednesday 14 July and closes on Tuesday 21 September. You can submit any comments you have about the proposals to us via [email](#) or you can take part in our short web-based survey which can be accessed via the website.


Assistant Chief Fire Officer Ben Norman says:

"Lancashire Fire and Rescue Service strives to be the best trained, best equipped, best accommodated and most professional fire and rescue service in the country but now we need your help to help us plan for the next five years.

"Our role has adapted and expanded in recent years and we now assist people in more ways than ever before. The last 12 months have really highlighted this change as Lancashire Fire and Rescue Service has played a significant role in the response to the coronavirus pandemic in Lancashire but whilst also responding to severe wildfires and flooding."

"We want to understand from you what you believe, as an employee and as a resident in Lancashire, are our greatest risks and what we should plan for in the future. I encourage you to read our draft Community Risk Management Plan and provide your honest feedback."

Department(s)

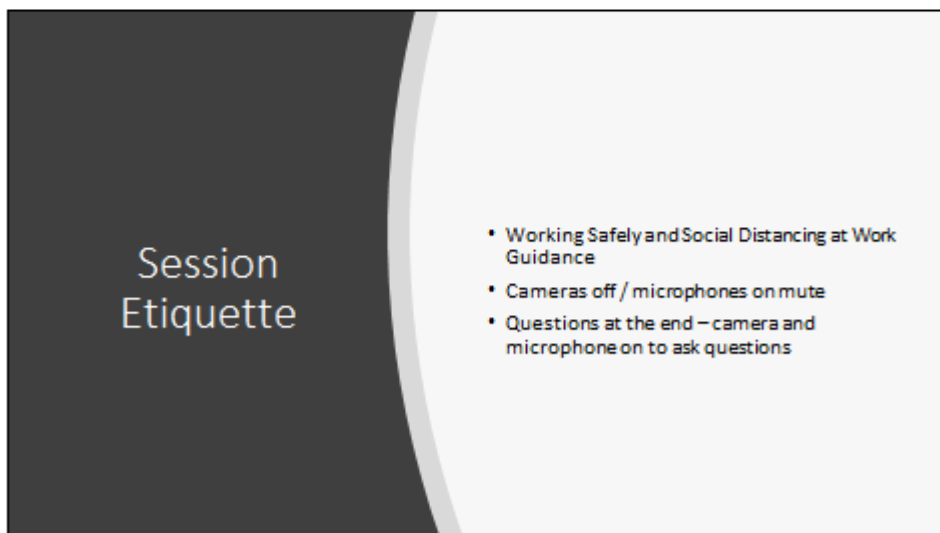


**We Need Your Views**  
Community Risk Management Plan  
making Lancashire safer  
Lancashire Fire and Rescue Service

## Staff presentation



1



2

## Aim

- To provide an overview of the new CRMP and associated document suite, and enable staff to provide consultation feedback.

3

## Objectives

- To outline the changes in methodology that support our Strategic Assessment of Risk (SAoR)
- How these changes affect the content and style of the new CRMP
- The documents that support the CRMP
- Encourage staff feedback as part of the consultation process

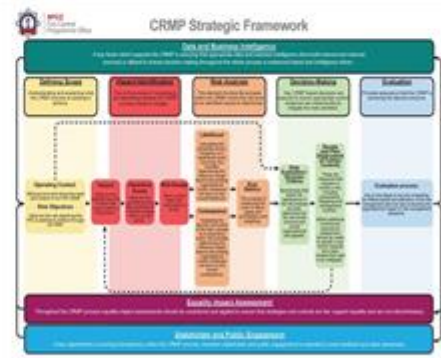
4

## Current Position

- Strategic Assessment of Risk (annually)
- Integrated Risk Management Plan (IRMP) 2017-2022
- These feed into Annual Service Plan - departmental / district plans - appraisal

5

## Supporting Framework



- Drivers – HMICFRS – NFCC (Community Risk Programme)

6

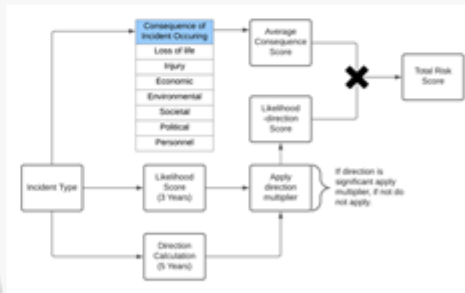
# Strategic Assessment of Risk

A new data driven methodology has been designed and implemented across 32 incident types.

|   |
|---|
| <ul style="list-style-type: none"> <li>Fire</li> <li>Wreck</li> <li>Accident involving train</li> <li>Commercial aviation</li> <li>Domestic aviation</li> <li>Subsidence</li> <li>Road traffic collisions (RTCs)</li> <li>Roadway collapsed (rail, bus, foot and space)</li> <li>High rise fire</li> <li>Marine fire (ships)</li> <li>Gas or oil storage tank fire</li> <li>Aviation other agencies</li> <li>Road vehicle fire</li> <li>Building under construction fire</li> <li>Marine incident (ships)</li> <li>Aviation</li> <li>Other outdoor fire (Primary)</li> <li>Secondary fire (Secondary)</li> <li>Heritage fire</li> <li>Removal of people from objects</li> <li>Other transport fire (bus, boat, train)</li> <li>Secondary fire (WRE)</li> <li>Removal of objects from people</li> <li>Other transport or making safe (lock fire)</li> <li>Roadway fire water</li> <li>Aviation (other)</li> <li>Gas Release</li> <li>Roadway fire (gas)</li> <li>Offshore structure</li> <li>Marine other (ships)</li> <li>Marine other (ships)</li> </ul> |
|---|

7

# Methodology



8

## Methodology outcomes

| Risk Number | Incident Type                             | Overall Rating |
|-------------|---|----------------|
| 1           | Crash                                     | Very High      |
| 2           | Crash                                     | Very High      |
| 3           | Accident involving driver                 | Very High      |
| 4           | Commercial property fire *1               | Very High      |
| 5           | Domestic fire and fire                    | Very High      |
| 6           | Industrial fire *1                        | Very High      |
| 7           | Road traffic collision (RTCs) *2          | High           |
| 8           | Rescue collapsed structure/continued pack | High           |
| 9           | High rise fire 1                          | High           |
| 10          | Incident (Incident (Major)                | High           |
| 11          | Waste disposal site fires                 | High           |
| 12          | Asphalt or other ignitions                | High           |
| 13          | Road vehicle fires *2                     | High           |
| 14          | Building or other infrastructure fires    | High           |
| 15          | Incident (Incident (Minor)                | Medium         |
| 16          | Animal rescue                             | Medium         |

| Overall risk rating percentage | Score        | Percentage |
|--------------------------------|--------------|------------|
| Very High                      | > 30.0       | > 66%      |
| High                           | 20.0 to 30.0 | 56% - 66%  |
| Medium                         | 10.0 to 20.0 | 35% - 45%  |
| Low                            | < 10.0       | < 35%      |

9

## How this changes the CRMP

Each identified risk that has been carried through from the SAoR has a range of reactive and proactive measures assigned

### FLOODING AND WATER RESCUE

Wide area and localized flooding can devastate parts of the community and leave an impression for years beyond an event. Water related incidents also tragically account for a number of deaths in Lancashire each year and can incur considerable economic loss. Below are some of the measures we have in place.



10

## New supporting document suite

### Strategic Assessment of Risk (SAoR)

#### Three core strategies:

1. Response
2. Prevention
3. Protection

#### Equality Impact Assessments:

1. CRMP
2. One for each core strategy

11

## Consultation

- Consultation 10 week period
- Key stakeholders identified and targeted both internal and external
- Feedback through [consultation@lancsfirerescue.org.uk](mailto:consultation@lancsfirerescue.org.uk)
- Survey Monkey accessible via Engine House or LFRS Website.
- Consultation review and collation of feedback

12



## Next steps

- Consultation feedback collated and considered
- Amendments to document set
- Re-presented to CFA
- Published 1<sup>st</sup> April 2022

13

## Questions



14